

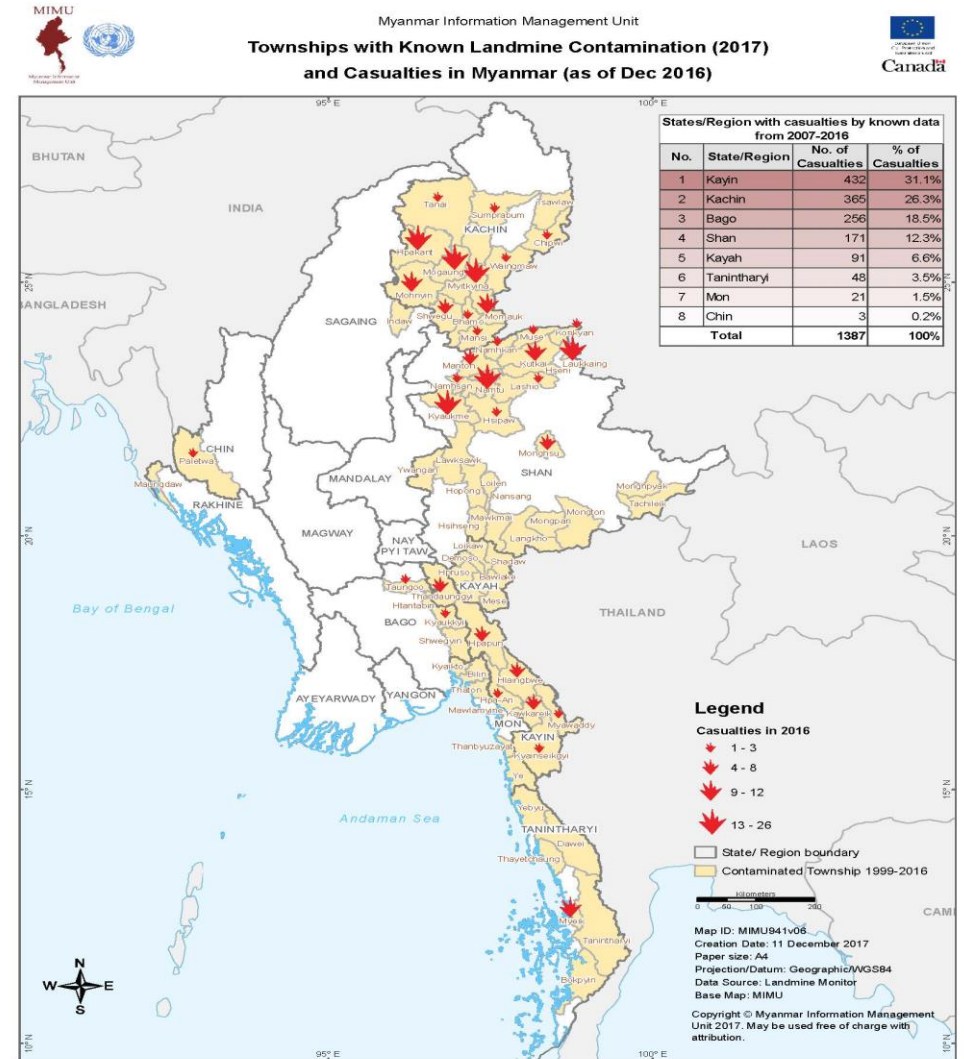


THE MYANMAR INTERACTIVE MRE APPLICATION



LANDMINE AND ERW THREAT

- 9 out of 14 States and Regions contaminated (Source: Landmine Monitor)
- In 2017 = 176 casualties were documented (52 died and 124 injured. Out of total 46 were children: 8 died and 38 injured) (Source: MRWG)
- Long history of contamination; new contamination ongoing
- Many casualties go unrecorded in conflict area due to the lack of access and sensitivity.



MYANMAR COMMON MRE TOOLKIT

- The KAP Survey and Rapid Assessment
- The Common MRE Toolkit was developed
- All the materials have been field-tested.
- Approved by Government in 2016 and being used by 40+ organizations in Myanmar



WHY WE WANTED TO DEVELOP INTERACTIVE MRE APPLICATION

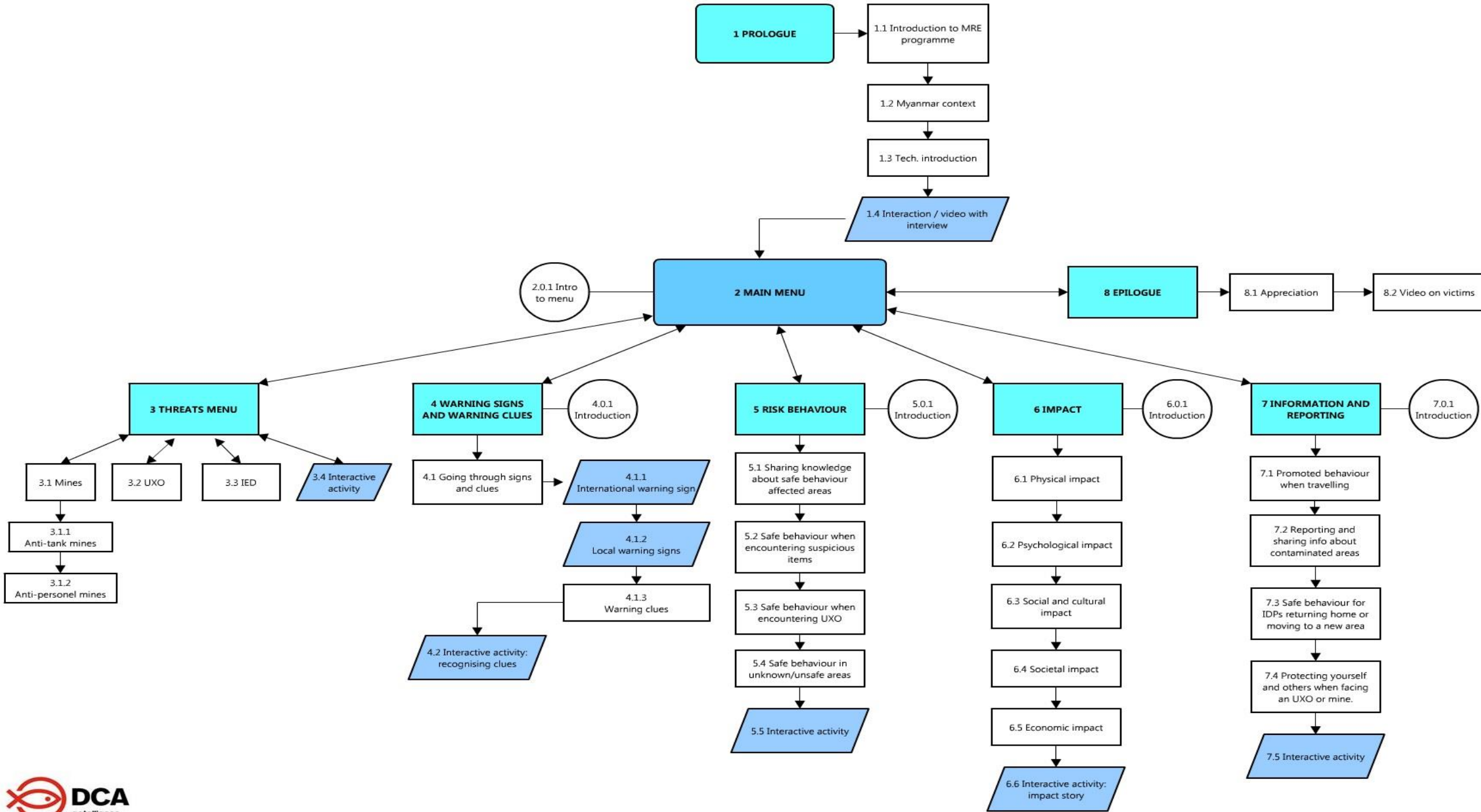


- An innovative and interactive tool, which capitalize on new Information and Communication Technologies
- Part of the Common MRE Toolkit, developed by DCA with the support of UNICEF and the Mine Risk Working Group and approved by the Department of Social Welfare.
- Will contribute to a more **interactive and dynamic learning experience** for users, including both MRE facilitators and target audiences
- People living in mine-affected areas have the possibility to learn in an interactive and dynamic manner

THE MYANMAR INTERACTIVE MRE APPLICATION

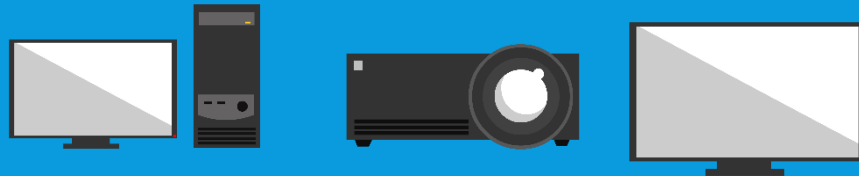
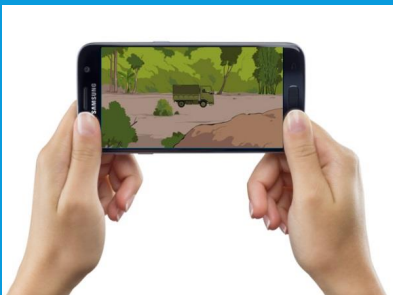
- An application built around the messages which are central to the MRE Common Toolkit, designed in 2015





FEATURE OF INTERACTIVE MRE APPLICATION

- An application, is designed for **any other smartphone app or computer program**
- Taking advantage of the **rapid expansion of smartphone and computer use** in the country
- Available, **at no cost**, through distribution services such as Google Play and App Store
- All MRE actors working in Myanmar will have access to this tool, either by using the mobile application on a **smartphone** or by using the program directly on a **computer**
- **Off line** (no internet required for sharing)

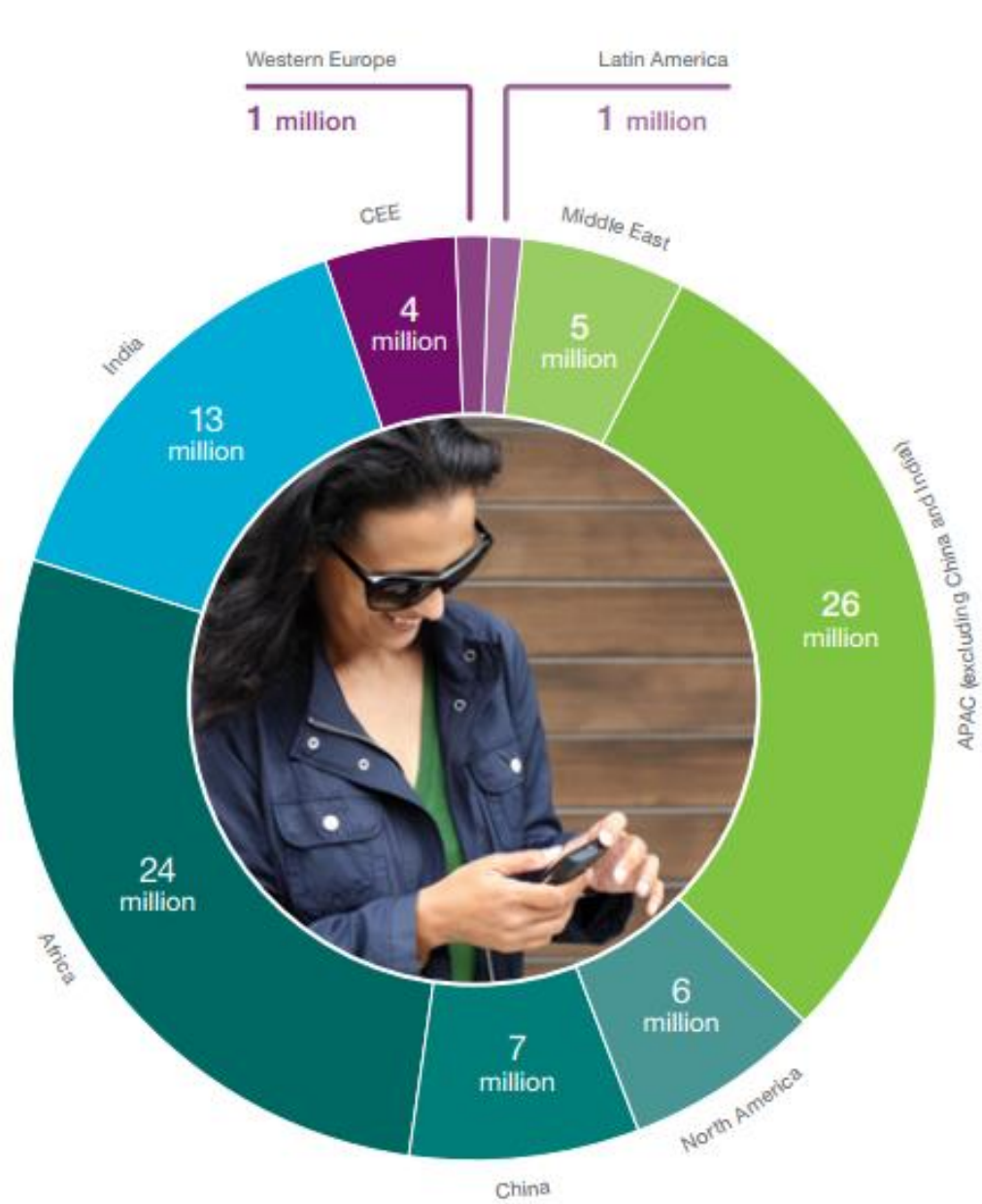


FEATURE OF INTERACTIVE MRE APPLICATION

- **Monitoring possibilities** : number of users, possibilities to know the location of users, number of time spend using the application etc. (eg. U report- network of 20,000 youth and adolescent)
- **Easy to update/ new features** can be added regularly/ reports can be sent / communication
- **Important information can be sent**...EMRE information or newsfeed for example (stay away from xx location! Ongoing clashes in this area... report of Mines or UXOs in this area, etc.)

COMPARATIVE ADVANTAGE OF APPLICATION

- Cost effective: Myanmar traditional printing **MRE toolkit at 50USD** per piece / **Smartphone** available at **19 USD** in Myanmar
- Lighter to transport when no access of roads to reach remote affected communities (Full **MRE tool kit Bag** around **5kg** / **Smartphones and tablets** between **0.2 kg** and **0.8 kg**



Top 5 countries by net additions Q3 2015

1	India	+13 million
2	China	+7 million
3	USA	+6 million
4	Myanmar	+5 million
5	Nigeria	+4 million



87 million new mobile subscriptions globally in Q3 2015

• The world added 87 million new mobile subscribers this past quarter, with nearly **6 percent** of them coming from Myanmar, making it **the fourth-fastest growing market** on earth, according to Ericsson's Q3 2015 Mobility Report.



Myanmar now has at least 33 million active mobile subscriptions in a country with an official population of 53 million.

Smartphone usage rate is reported at 80%.



In Myanmar, a smartphone is available starting from \$19



Thank you